

# SAFARI Box Guide for WHS

## Turning on your Projector

- Point the keyboard toward the Safari Box Infrared reader
- Press the Power button on the top row of the keyboard
- Your projector should power on and show the Safari Home Screen (see right)

## Changing the input to the projector

- Point the keyboard toward the Safari Box Infrared reader
- Press the F11 key on the keyboard until the desired screen shows up
- Options:
  - RGB1 - Computer/laptop
  - Video - inclass VCR/DVD player
  - RGB2 - Safari System

## Turning off your Projector

- Point the keyboard toward the Safari Box Infrared reader
- Press the Power button on the top row of the keyboard

## Accessing a Movie scheduled through Tamika/Media

- Point the keyboard toward the Safari Box Infrared reader
- Make sure you see the Safari System Screen (or that you are on RGB2 input)
- Use the blue spongy mouse on the keyboard to select "Device Commander" on the left side of the screen. Press the mouse button on the top left side of the keyboard to make the selection.
- Your movie title should appear under "\*\*Reservations\*\*" at the top of the screen
- Use the blue spongy mouse to select the title of your movie
- Either press the Full Screen button on the keyboard, or use the mouse to select the Full Screen option on the screen
- Volume controls are located at the top of the keyboard.
- F2 will bring up player controls on the screen and hide them when you are done using them.
- To close the "Device Commander" when you are finished, press the Close button on the keyboard.

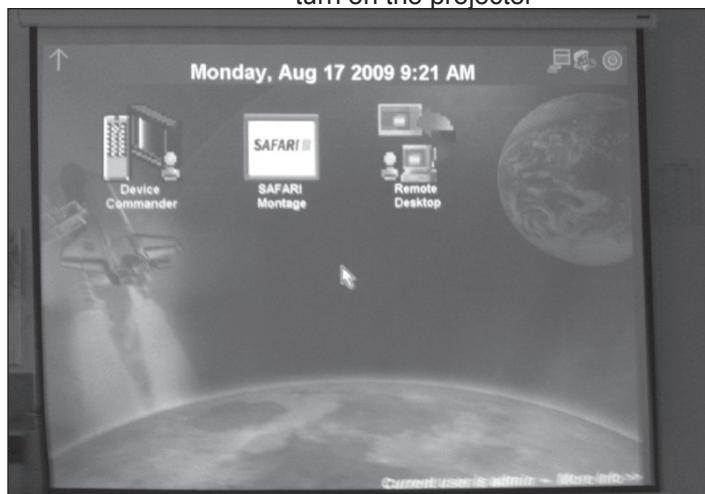
## Accessing Cable Channels

- Choose the "Device Commander" icon from the Safari Home Screen.
- Select the Cable Channels Menu.
- Select the Station you would like to watch.

## Accessing a Movie through Safari Montage

- Point the keyboard toward the Safari Box Infrared reader
- Make sure you see the Safari System Screen (or that you are on RGB2 input)
- Using the blue spongy mouse on the keyboard, select "Safari Montage" icon. Press the mouse button on the top left side of the keyboard to make the selection.

**SAFARI** Screen - You should see this screen when you turn on the projector



## SAFARI Keyboard



- Use your NETID to login. Follow directions from the Safari Montage QuickGuide.
- To close the Montage screen when you are done, use the Close button on the keyboard.

# ***SAFARI* Box Troubleshooting**

---

## ***Projector Won't Turn On***

- Are you pointing the keyboard toward the Infra-red Reader?
  - Did you wait for the projector to warm up (it can take a minute or two from the time you press the power button for the projector to actually produce an image on the screen)
  - Did you press the Power Button more than once? (You may need to wait a few minutes to let the projector reset and then press the power button- **ONLY** once)
- 

## ***Safari Box is not responding to your keyboard commands***

- Are you pointing the keyboard toward the Infra-red Reader?
  - Check the batteries in the keyboard. The keyboard takes 4 Double A batteries and they will run out eventually.
- 

## ***Your movie doesn't appear in the Device Commander Reservations Menu***

- Did you request the video by D block the day **BEFORE** you needed it?
  - Call Tamika to check the scheduled room and time
  - It is possible that someone else in the building has accessed your movie through the Media Sources menu. Call Tamika to have her reset the reservation.
- \* Please be a nice colleague and **NEVER** watch a movie you find through the Media Sources menu!
- 

**To report a problem with your system, please enter a Helpdesk ticket online.**

**If you have an emergency and need immediate assistance, please call Tamika at extension 7100 for help.**